



COURTESY OF SITE SANTA FE

"Vanishing Point No. 2," Adrian Piper's 2009 sanded drawing on pre-printed paper, is one of the works included in the "March 2012 Project" on SITE Santa Fe's website.

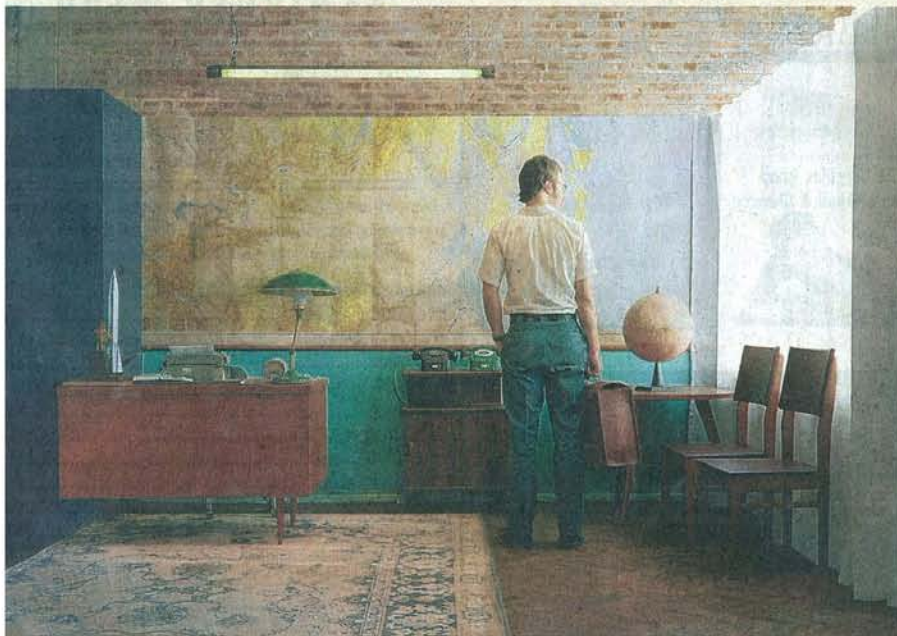
If you go

WHAT: "Time-Lapse," multi-media, interactive group exhibition

WHEN: Today through May 20; reception 5-7 p.m. today

WHERE: SITE Santa Fe, 1606 Paseo de Peralta

CONTACT: 505-989-1199; sitesantafe.org



COURTESY OF THE ARTIST AND CRISTIN TIERNEY GALLERY, NEW YORK

"Jeff in Yuri's Office" is a large 2010 digital c-print made by Monia Lippi for Eve Sussman and the Rufus Corp. Sussman's 2011 film "whiteonwhite:algorithmicnoir" endlessly recombines images, words and music to create a constantly shifting narrative.

By KATE MCGRAW
For the Journal

"Time keeps on slippin', slippin', slippin' into the future..."

— Steve Miller Band,
"Fly Like An Eagle"

The nature of time and the changes it brings to our lives form the subtext to the newest group show opening today at SITE Santa Fe.

This group show with installations, performances and films challenges the notion that an art exhibition is a fixed entity. With hourly, daily and weekly alterations to the works in the show, no two days of "Time-Lapse" will be the same through its approximately three-month run.

A trio of Brooklynites anchors the four installations by artists whose work is showcased in the main exhibition. In "Time-Lapse," the notion of change over time is integral to the structure of the artwork itself.

Brooklyn-based artist Mary Temple was born in Arizona and earned a BFA and MFA from Arizona State University, and another master's degree from Skowhegan School of Painting and Sculpture in Maine. Primarily known for her trompe l'oeil installations, Temple makes cross-disciplinary conceptual artworks that blur boundaries between

painting, sculpture and drawing.

Her "Currency" is a drawing project the artist began on Sept. 24, 2007, and has continued every day since. Temple creates a new drawing from images and headlines from various Internet news sites, including The New York Times and others. She makes a portrait of a political figure depicted in the news and creates accompanying text that is an amalgam of the headline and the image caption.

During the run of "Time-Lapse," Temple will scan her daily drawings and send a digital image to SITE, where the image will be printed out and added to a growing grid of drawings on the gallery walls.

Byron Kim was born in La Jolla, Calif., in 1961. He also lives and works in Brooklyn now. Kim earned a degree from Yale University and also attended Skowhegan. In the early 1990s he produced minimalist paintings exploring racial identity. Kim's work in the early 1990s consisted of monochrome canvases depicting the skin tones of friends and family. He gained early recognition for "Synecdoche," his contribution to the 1993 Whitney Biennial, which embodied the aesthetic and political aspirations of the art in that year's exhibition. "Synecdoche" (1991-1992) is